



Please join us!

Butte County is asking for your input on emergency evacuation map updates in your area.

Butte County is in the process of updating emergency evacuation maps to enhance community preparedness efforts. The project will update or expand emergency evacuation maps which show emergency travel routes and public assembly points. The Emergency Evacuation Maps are used during fires, disasters, or other emergencies requiring evacuations. Emergency evacuation planning is essential to the safety of Butte County residents.

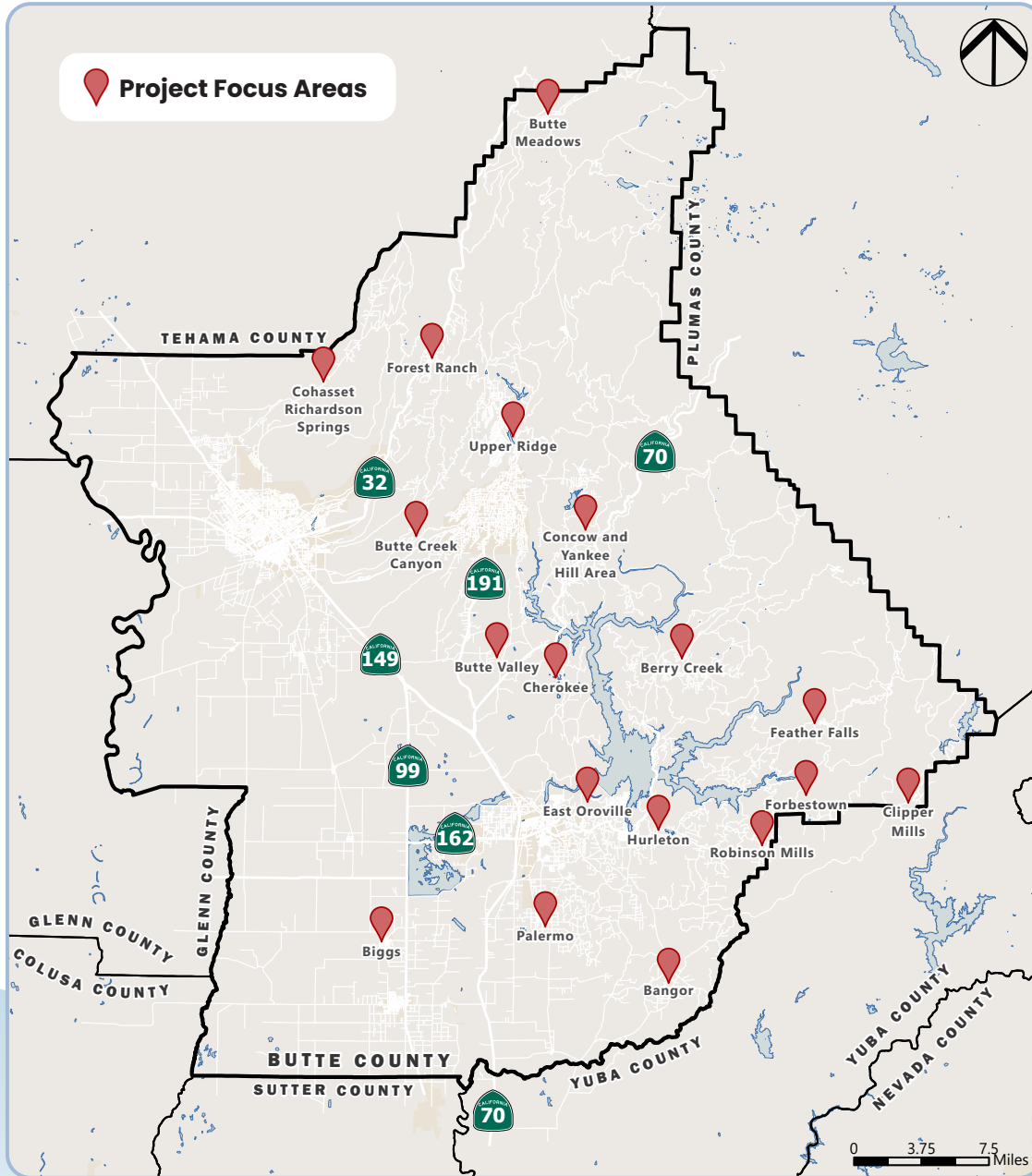
Get Involved! Attend a meeting in your community to provide input on the evacuation routes and assembly points, and meet your local law enforcement, fire, and emergency managers.

► *Each public meeting will focus on a different community. Be sure to attend a meeting scheduled in your community!*

	Community		Date		Time		Location
	Forest Ranch / Butte Meadows		Saturday, April 20		12:15pm-2:15pm		Forest Ranch Charter School 15815 Cedar Creek Road, Forest Ranch
	Upper Ridge		Monday, April 29		6:00pm-8:00pm		Magalia Community Center 13917 South Park Drive, Magalia
	East Oroville / Cherokee		Wednesday, May 1		5:00pm-7:00pm		Southside Community Center 2959 Lower Wyandotte Road, Oroville
	Cohasset / Richardson Springs		Saturday, May 4		3:00pm-5:00pm		Cohasset Community Center 11 Maple Creek Ranch Road, Cohasset
	Palermo / Bangor		Thursday, May 9		5:00pm-7:00pm		Bangor Community Hall 7500 Oro Bangor Highway, Bangor
	Butte Creek / Butte Valley		Monday, May 13		6:00pm-8:00pm		Butte College Allied Health North Building - Room 118A 3536 Butte Campus Drive, Butte Valley
	Forbestown / Robinson Mill / Clipper Mills		Tuesday, May 14		6:00pm-8:00pm		Forbestown Hall 19100 New York Flat Road, Forbestown
	Berry Creek		Friday, May 17		5:30pm-7:30pm		Berry Creek Community Church 1461 Bald Rock Road, Berry Creek
	Concow / Yankee Hill Area		Tuesday, May 21		6:00pm-8:00pm		Historic Schoolhouse 11666 Concow Road, Concow
	Hurleton / Feather Falls		Wednesday, May 22		4:00pm-6:00pm		Gold Flake Saloon and Cafe 1301 Lumpkin Road, Feather Falls
	City of Biggs		Tuesday, June 11		5:00pm		Council Chambers 3016 Sixth Street, Biggs



Community Evacuation Map Update Project Focus Areas



Learn More and Get Involved

To view current evacuation maps, please visit the County website:
www.buttecounty.net/evacuation-map-update

Contact Information



evacuationmapupdate@buttecounty.net



(530) 552-3684